

# Breed'n Betsy/Bovine Operating setup

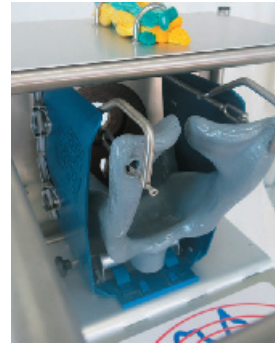
## Setup & usage



1. Set up the frame



2. Place in pelvic wall  
3. Attach pelvic rods



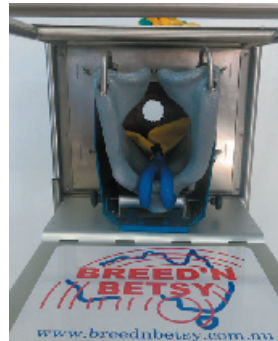
4. Assemble pelvis



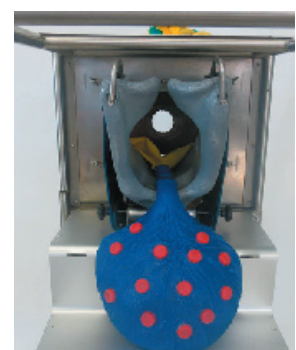
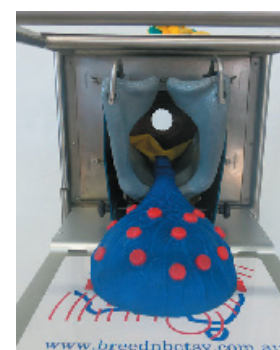
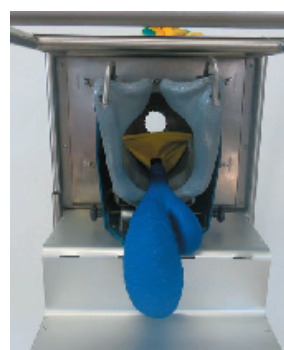
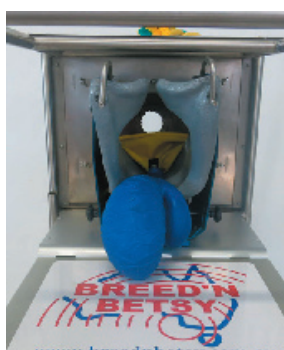
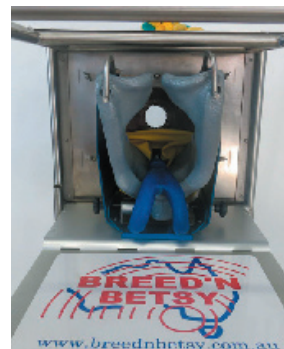
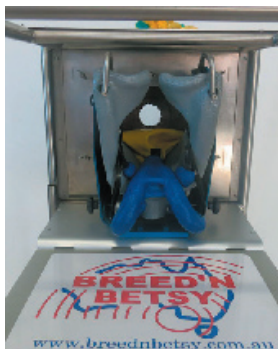
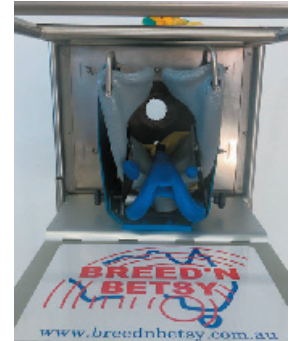
Attaching organs to pelvic wall



Using rectal wall

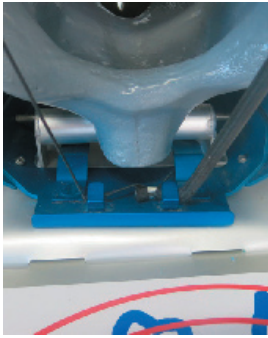


Attaching broad ligaments to the pelvis for medium & large open reproductive tract

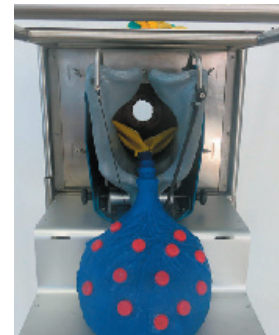
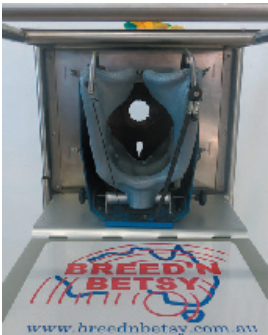
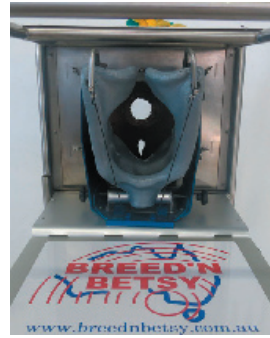




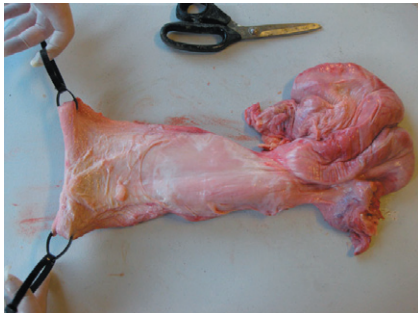
## Setup & Usage continued..



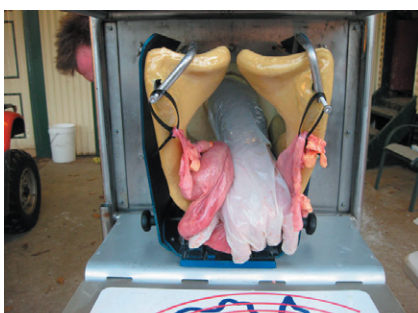
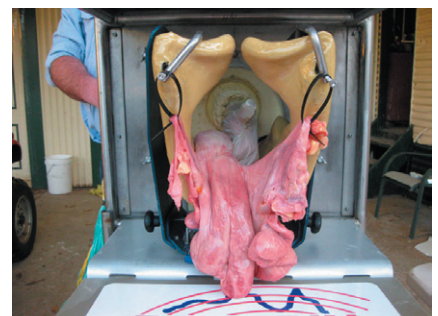
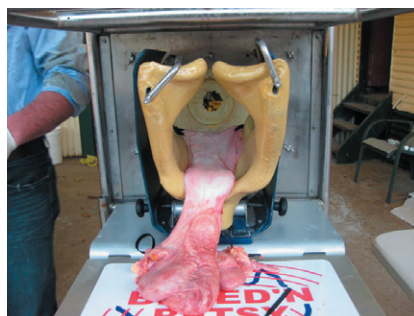
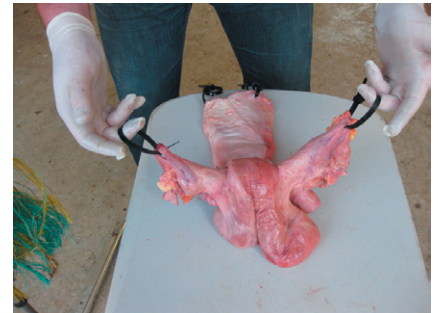
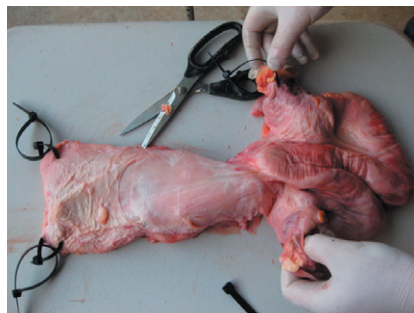
Attaching uterine arteries



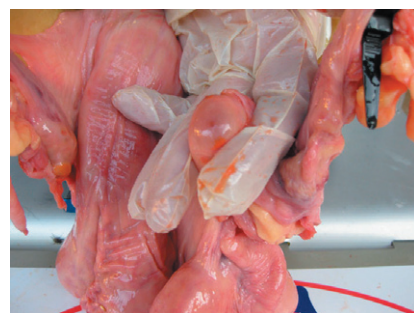
## Using real organs



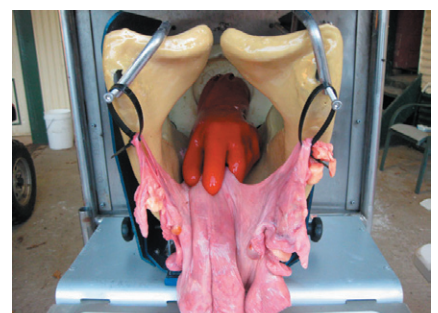
Use cable ties to attach organ



Indirect & direct retraction



Ovary palpation



Breeding tracts

# Using real organs – *Water Rectum*

1 - 3. (*Photos*) Inserting the reproductive tract inside the palpation liner is used for

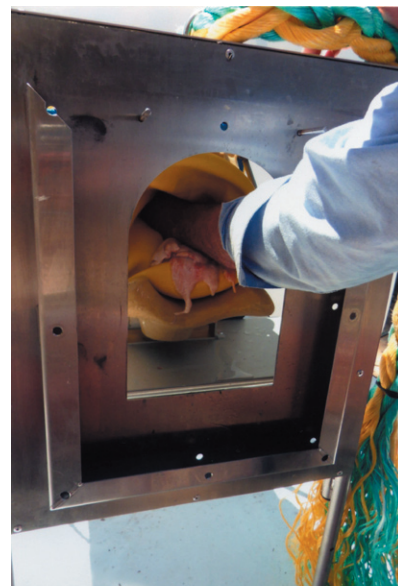
- Artificial insemination
- Dye checking
- Palpation

*Photo 1 and 2 for operation manual only*

1.



2.



3.



To breed tracts, the hand and the pippett must be inserted through the anus to work.